

Aquadopp Z-Cell

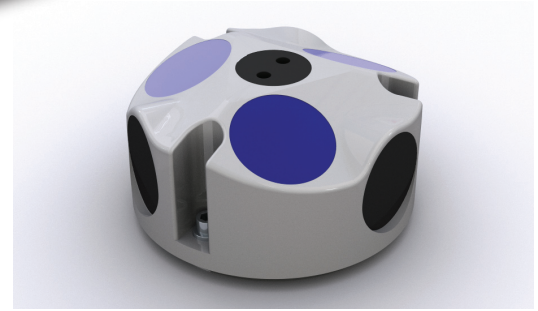
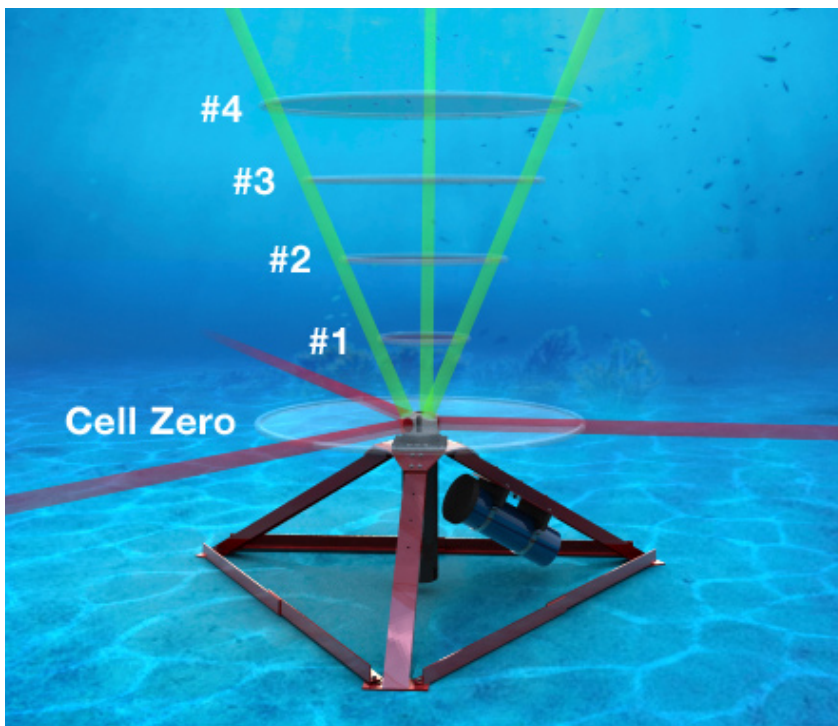
Full Water Column Profiler

No Blanking

A current profiler cannot measure the complete profile from the bottom to the surface. Instead, it loses data close to the instrument and close to the far boundary. The boundary loss is due to sidelobe interference and nobody has found a way to solve this problem. The near-instrument loss comes from the combination of mounting height, the electro-acoustic blanking and the offset of the first measurement cell. In many applications this means that valuable and interesting information about the ocean current is lost.

The Nortek solution

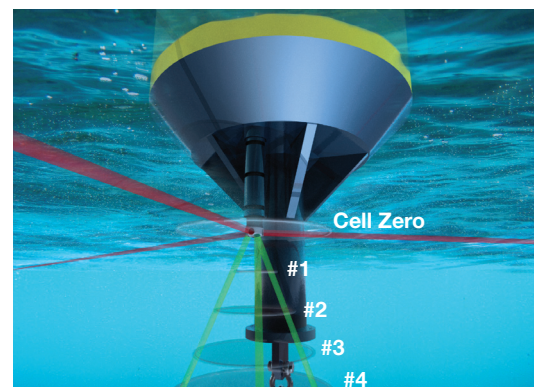
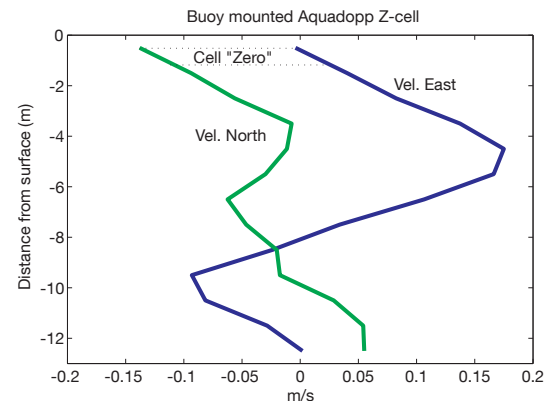
In the new Aquadopp Z-Cell, Nortek has extended the profiling range by introducing a "Cell Zero". This new data is generated by an extra set of horizontal transducers. The transducers operate at a different frequency (2 MHz) and provide the 2D current velocity at the level of the instrument. This is to the benefit of anyone who is interested in the detailed current velocity in the boundary layer.



- Current profiler acoustic frequency: 1 MHz
- Cell zero acoustic frequency: 2 MHz
- Maximum profiling range: 18-25 m
- Cell size: 0.3-4 m
- Maximum # cells: 129
- Accuracy: 1% of measured value ± 0.5 cm/s
- Max. Sampling rate: 1 Hz

Options for analog input from external sensors (max 2) and RS232/422 communication. All systems shipped with serial - USB converter. PC Software for system configuration, data recording, data conversion is included as part of the base system.

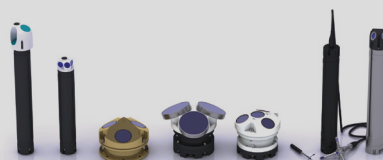
Measured "Cell Zero" data



CURRENT AND WAVE MEASUREMENTS IN THE OCEAN, LAKE AND LABORATORY



Nortek AS
Vangkroken 2
1351 Rud, Norway
Tel: +47 6717 4500
Fax: +47 6713 6770
E-mail: inquiry@nortek.no



www.nortek-as.com
True innovation makes a difference